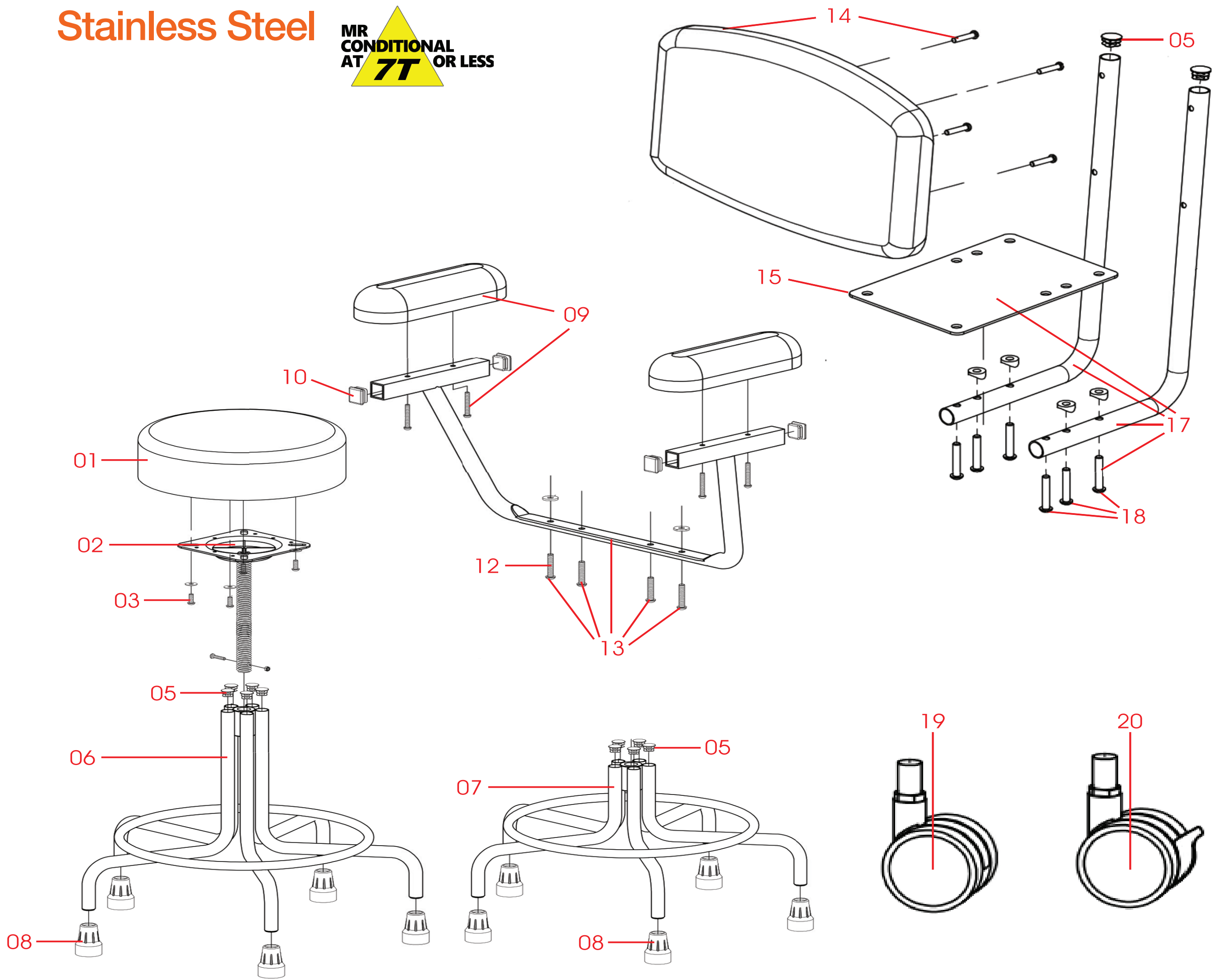


## Stainless Steel



**Click Fig. Numbers or Table to Visit Products**

Fig	Model	Description
<b>1</b>	<b>CH-8903</b> <b>CH-8917</b>	Seat, Burgandy w/Attaching Hardware Seat, Green w/Attaching Hardware
<b>2</b>	<b>CH-8927</b>	Height Adjust Threaded Stem w/Seat Plate
<b>3</b>	<b>CH-8928</b>	Attaching Hardware Set for Seat
<b>5</b>	<b>CH-8929</b>	Round Plastic Plug, Black
<b>6</b>	<b>CH-8087</b>	Base Assembly, 21" to 27" Seat Height, w/ Rubber Tips
<b>7</b>	<b>CH-8086</b>	Base Assembly, 15" to 21" Seat Height, w/ Rubber Tips
<b>8</b>	<b>CH-8930</b>	Rubber Tip
<b>9</b>	<b>CH-8909</b> <b>CH-8919</b>	Armrest, Burgandy, w/Attaching Hardware Armrest, Green, w/Attaching Hardware

Fig	Model	Description
<b>10</b>	<b>CH-8931</b>	Square Plastic Plug, Black
<b>12</b>	<b>CH-8932</b>	Attaching Hardware Set for Arm Bracket
<b>13</b>	<b>CH-8905</b>	Arm Bracket Only, w/Attaching Hardware
<b>14</b>	<b>CH-8911</b> <b>CH-8923</b>	Back, Burgandy w/Attaching Hardware Back, Green w/Attaching Hardware
<b>15</b>	<b>CH-8933</b>	Stool Seat Support Plate, 8 Holes
<b>17</b>	<b>CH-8904</b>	Back Frame Only w/Attaching Hardware
<b>18</b>	<b>CH-8934</b>	Attaching Hardware Set for Back Frame
<b>19</b>	<b>CH-1940</b>	2" Non-Locking Twin Wheel Caster w/Threaded Stem
<b>20</b>	<b>CH-1941</b>	2" Locking Twin Wheel Caster w/Threaded Stem